

Assembly Instructions – Roof for Modular Bin 159: Models M2, M3, M4, M5

The roof should be assembled with particular care to avoid any damage or scratches.

Two people are required for installation, as it is difficult for one person to hold the roof in place, align the screw with the correct hole, and simultaneously attach the washers and nuts. This also ensures the lid doesn't drop and the screws don't fall out.

The average installation time for one roof should not exceed **10 minutes**.

Required tools:

- 3 mm Allen key (hex key)

Please follow the steps carefully and proceed gently to ensure a safe and precise assembly.



Required tools (continued):

- 3 mm Allen key (hex key)



Step 1:

Prepare the bin to which the roof will be mounted.
Ensure the bin is clean, stable, and placed on a flat surface to facilitate safe and accurate assembly.



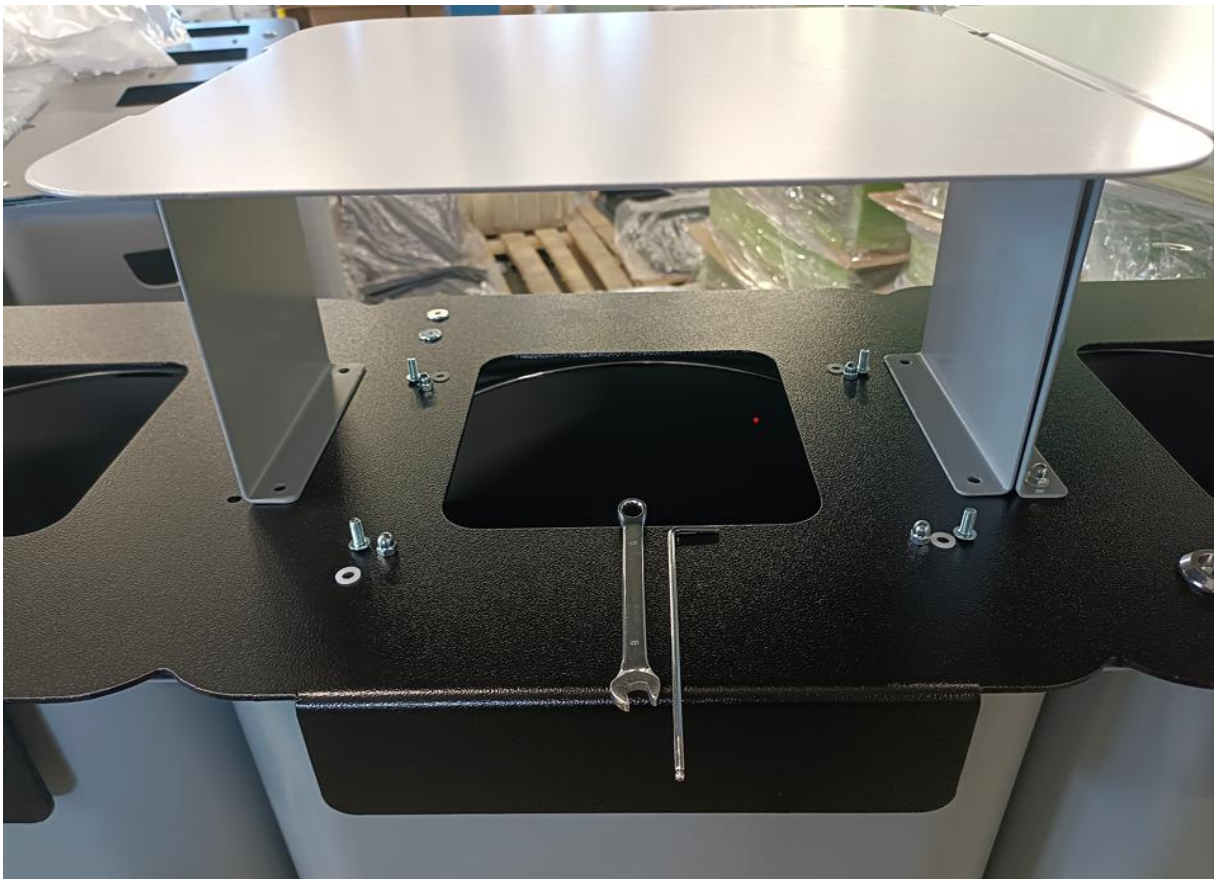
Step 2:

Remove the caps from the holes in the lid.



Step 3:

Prepare the roof along with the set of fasteners and the necessary tools.



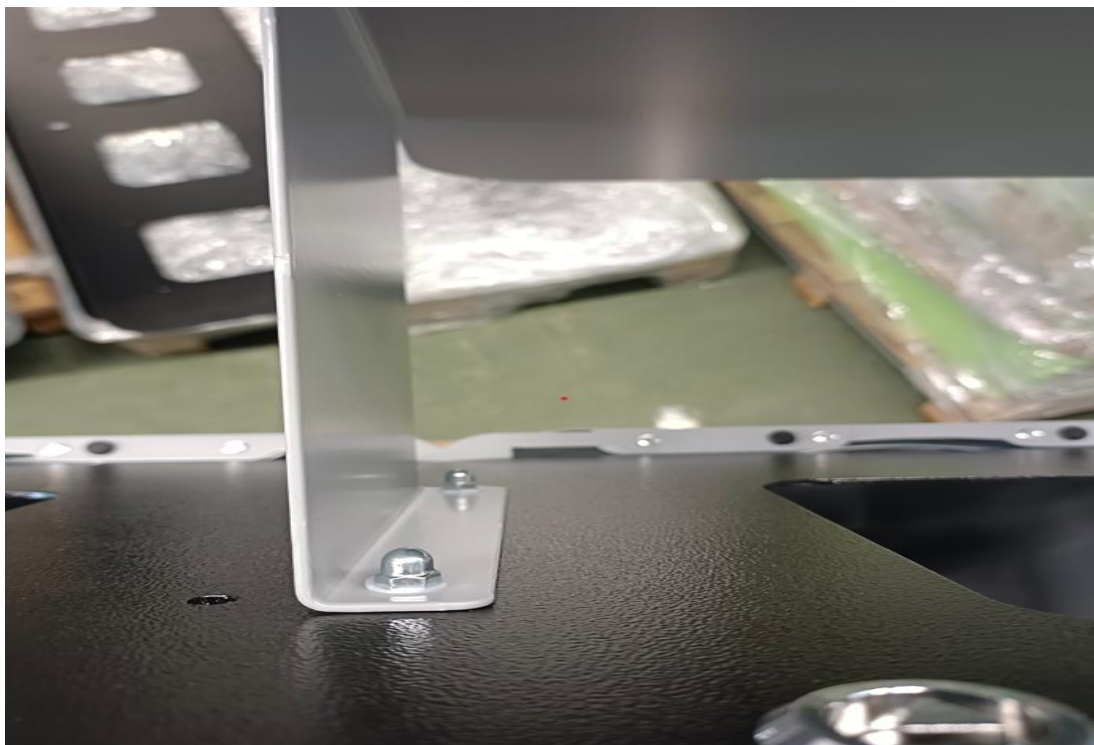
Step 4:

Slightly open the lid, then insert the screw into the appropriate hole.



Step 5:

With particular care, place the roof on top, then attach the plastic washer and the cap nut.



Step 6:

Using the previously mentioned tools, and with particular care, tighten the remaining screws to secure the roof to the lid.

